

Quero Ser Fiel

Bruno Mira

INTRO

Gm

Éb

Bb

F/A



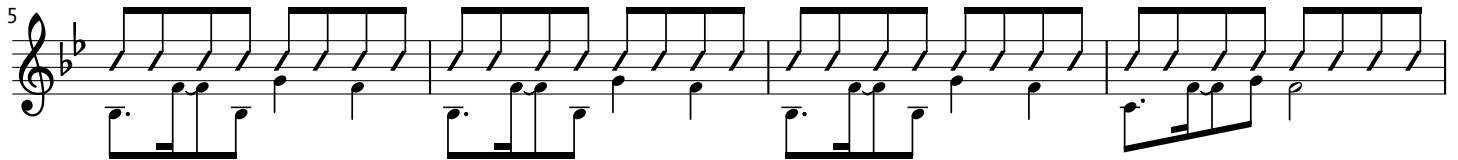
>Guit.El.
>Guit.Ac.

Gm

Éb

Bb

F/A



>Bat+Bx (marcações)

1

Bb

Fsus4

Gm

Éb



4x GAc e GEl (suave)

4x >Bat+Bx

2

Bb

F/A

Gm

Éb



*

Gm

F/A

Bb

/D

Éb



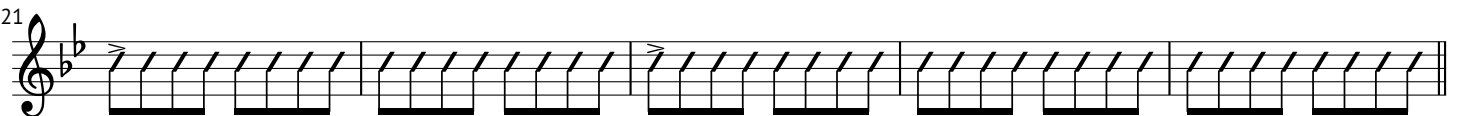
Cm

Bb/D

Éb

Fsus4

F



3

Gm

Éb

Bb

F/A

F



>1 - Todos

>2 - Suave (começa a crescer em *)

>3 - Forte 4x

>2 - Suave (suspende no último acorde)